

Bases

Bases are used to mount the AS-Interface module to the machine and also hold the flat cable in place. Most bases are sold separately so you can choose the version that best fits the application. The bases with addressing jacks, U-G1FA, U-G1FFA should be used where ever possible because of the ease of programming and diagnostics without having to remove the module from the base.

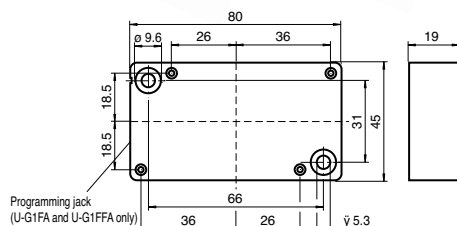
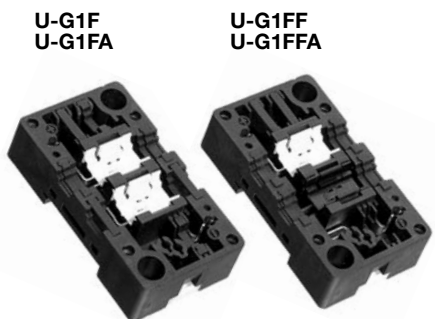
Model	Description
U-G3FF ⚡	Base to connect yellow and black cable to all 4 port G2 modules
U-G3FF-DIN	Base to connect yellow and black cable to all 4 port G2 modules, with DIN rail clip
U-G2FF ⚡	Base to connect yellow and black cable to all 8 port G2 modules
U-G2FF-DIN	Base to connect yellow and black cable to all 8 port G2 modules, with DIN rail clip
U-G1F ⚡	Connection of up to 2 yellow flat cables to any module that supports this base type
U-G1FA ⚡	Connection of up to 2 yellow flat cables to any module that supports this base type, with addressing jack
U-G1FF ⚡	Connection of 1 yellow and 1 black flat cable to any module that supports this base type
U-G1FFA ⚡	Connection of 1 yellow and 1 black flat cable to any module that supports this base type, with addressing jack
U-G1PP ⚡	Round cable base to connect AS-Interface and auxiliary power to any module that supports this base type
VAZ-DK-G1	Cover for any U-G1... base

⚡ Stocked item
Consult factory for all other models

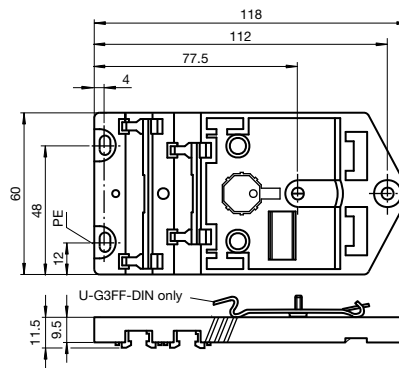
Base Specifications

PROTECTION (IEC)	IP67 (with top connected)	
HOUSING MATERIAL	PBT	
TEMPERATURE RANGE	Working	-13 °F to +131 °F (-25 °C to +60 °C)
	Storage	-40 °F to +185 °F (-40 °C to +85 °C)

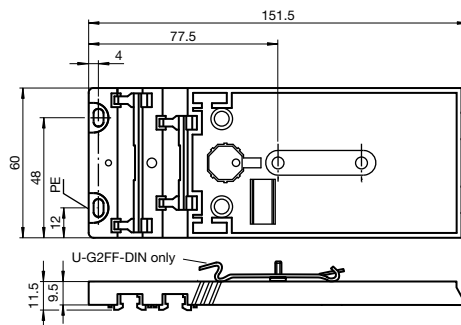
Dimensions in mm



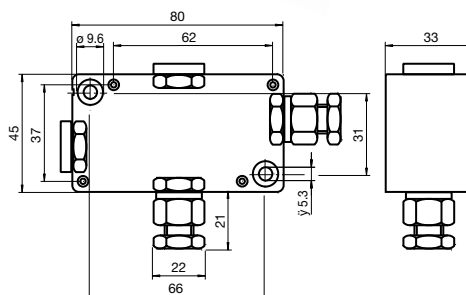
U-G3FF
U-G3FF-DIN



U-G2FF
U-G2FF-DIN



U-G1PP



VAZ-DK-G1



Subject to modifications without notice

Pepperl+Fuchs Group
www.pepperl-fuchs.com

USA: +1 330 486 0001
fa-info@us.pepperl-fuchs.com

Germany: +49 621 776-4411
fa-info@de.pepperl-fuchs.com

Copyright Pepperl+Fuchs
Singapore: +65 6779 9091
fa-info@sg.pepperl-fuchs.com

PF PEPPERL+FUCHS
SENSING YOUR NEEDS